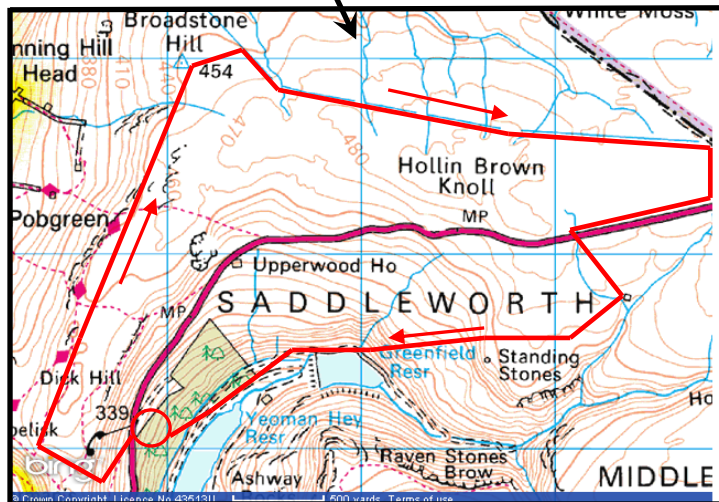


# THE COTTON FAMINE TRAIL – Sunday 15<sup>th</sup> May 2016



Meet at Binn Green car park on the A635 Holmfirth to Greenfield road @ 10:00am.  
The walk is around 6.5 to 7 miles with one steep climb at the beginning.  
Point of interest is the Cotton Famine Trail which will take us from Broadstone Trig to the Pennine Way where we will cross the A635 and drop down past Rimmon Cottage to Greenfield reservoir and back to Binn Green car park and the cars.